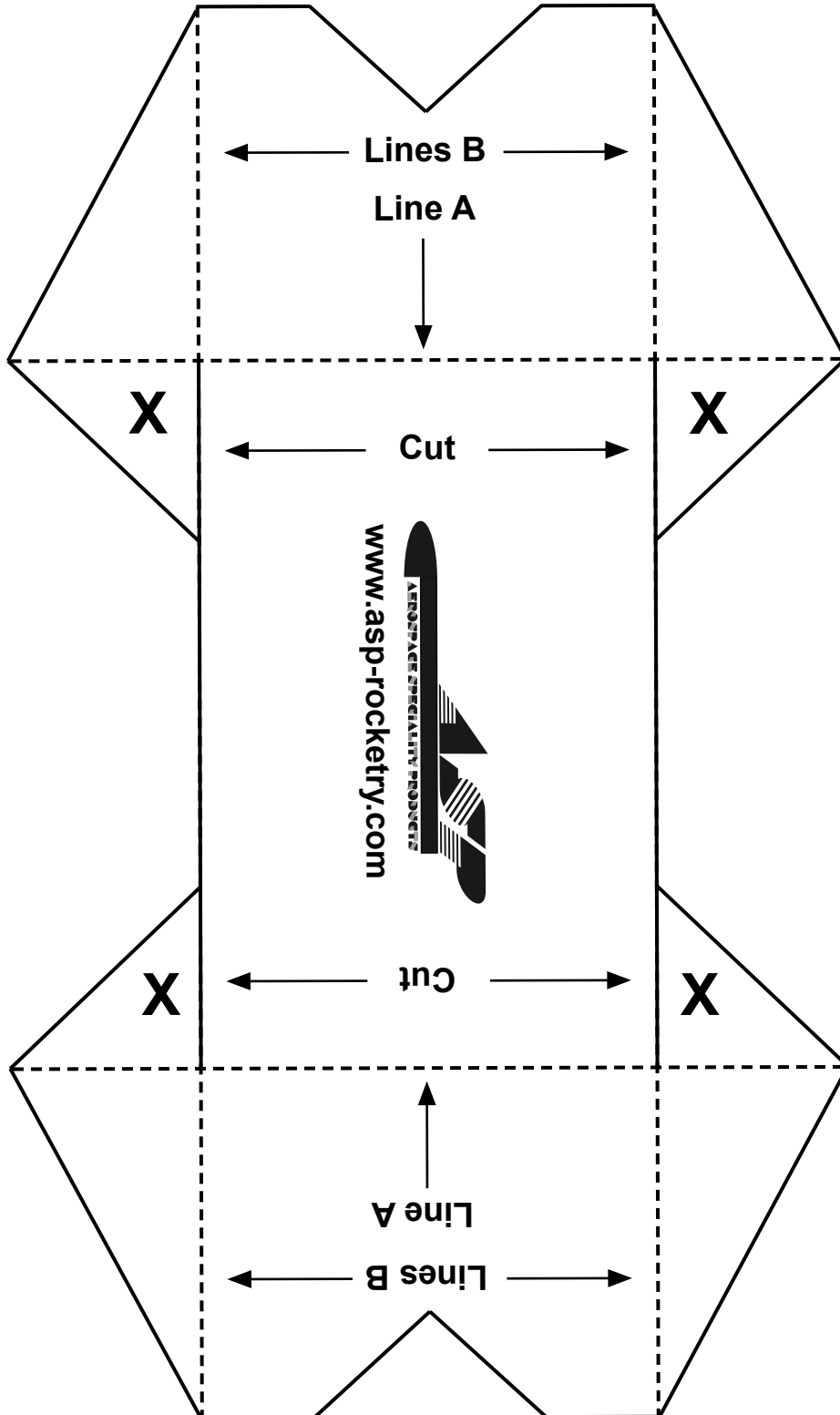


Use to support small models while allowing fins to dry, applying fillets, etc.

# "Rocket Caddy Mini"



- 1) Print out or photocopy on cardstock or heavy paper.
- 2) Cut out along the *solid* lines.
- 3) Fold ends up 90 degrees along dotted Lines A.
- 4) Fold sides along dotted Lines B.
- 5) Tape (or glue) the triangular sections (marked with an X) under the bottom for support.

